

Rosenhof

Floor-Lights & co:

1xLook Viper
Antari Fazer
4x par 64 floor

PA:

left/right: 1x L acoustics A15 (focus)
2x L acoustics A15 (wide)
sub: 6x L acoustics KS21
Amp`s 3x L acoustics LA4X

Infrastruktur:

6x cat5e FOH to stage left
4x DMX 5-pol FOH to Dimmercity (stage left)

Power:

stage left:	mid:	stage right:
1x63A		1x63A
2x32A	1x32A	2x32A
2x16A	2x16A	2x16A
6x Schuko	6x Schuko	6x Schuko

Other:

1x 5000 Ansi Projector (Mitsubishi)
1x mobile screen (300x160cm)

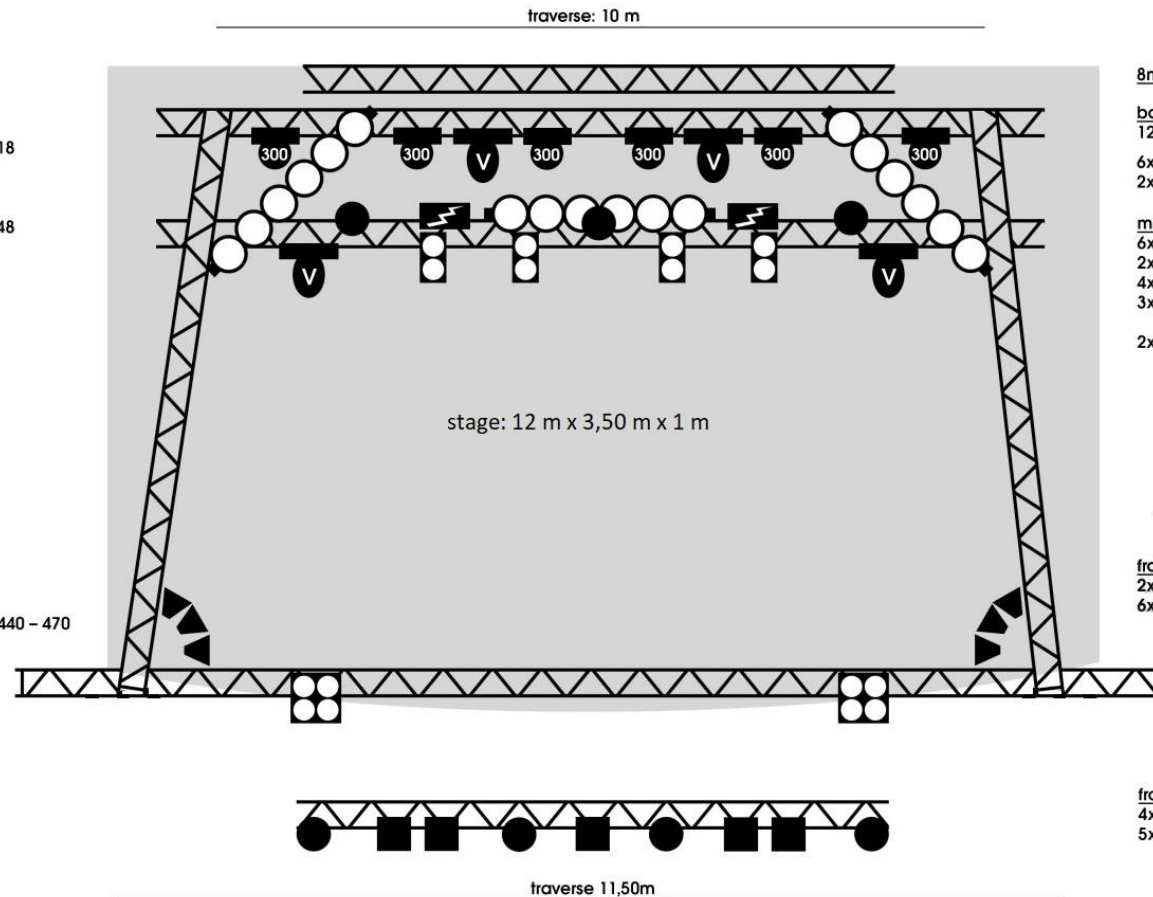
Sound: Alexander Kloweit mail: alex.k@goldrush-produktion.de Phone: 0177/3877933

Light: Henning Kallmeyer mail: kucobtrain@gmail.com Phone: 0163/8768666

Rosenhof

DMX-Channel List: (stage right to stage left)

4-Light-Blinder	1 - 2
Leco's Fronttruss	7 - 8 - 9 - 10
Par64 (Mid)	13 - 14 - 15 - 16 - 17 - 18
Fresnell's	25 - 26 - 27 - 28 - 29
Par64 (Left + Right)	43 - 44 - 45 - 46 - 47 - 48
Look Viper	49
Antari Fazer	50 - 51
Leco's Midtruss	53 - 54 - 55
2-Light Blinder	56 - 57 - 58 - 59
LED's Alleys (7ch) - stage right	81 - 88 - 95
LED's Alleys (7ch) - stage left	60 - 67 - 74
Martin Atomics (4ch)	102 - 106
LED's Fronttruss (7ch)	111 - 118 - 125 - 132
Robe Viva (Mode 2 / 23ch)	200 - 230 - 260 - 290
Robe Robin Wash (Mode 3 / 15ch)	320 - 350 - 380 - 410 - 440 - 470



8m backdroptruss

backtruss:

12x par 64 cans

6x Robe Robin 300 (Wash)
2x Robe Viva (Spot)

midtruss:

6x par 64 cans
2x Martin Atomics
4x 2-light blinder
3x 750w leco

2x Robe Viva (Spot)

fronttruss 1:

2x 4-light blinder
6x led cans (alleys)

fronttruss 2:

4x 750w leco
5x 1000w fresnell

Sound: Alexander Kloweit

mail: alex.k@goldrush-produktion.de

Phone: 0177/3877933

Light: Henning Kallmeyer

mail: kucobtrain@googlemail.com

Phone: 0163/8768666